

# Norway : Care

**Welfare state and family strategies  
for child care and elderly care**



**NOVA**

A research institute at  
OSLO AND AKERSHUS  
UNIVERSITY COLLEGE  
OF APPLIED SCIENCES

# Child day care and the welfare state

- 1963: a social service
  - 259 childcare day facilities (kindergartens)
  - 8156 children
  - 1177 employed
- 2013: an educational service
  - 6,273 kindergartens
  - 286147 children
  - 73229 employed (full-time equivalents)



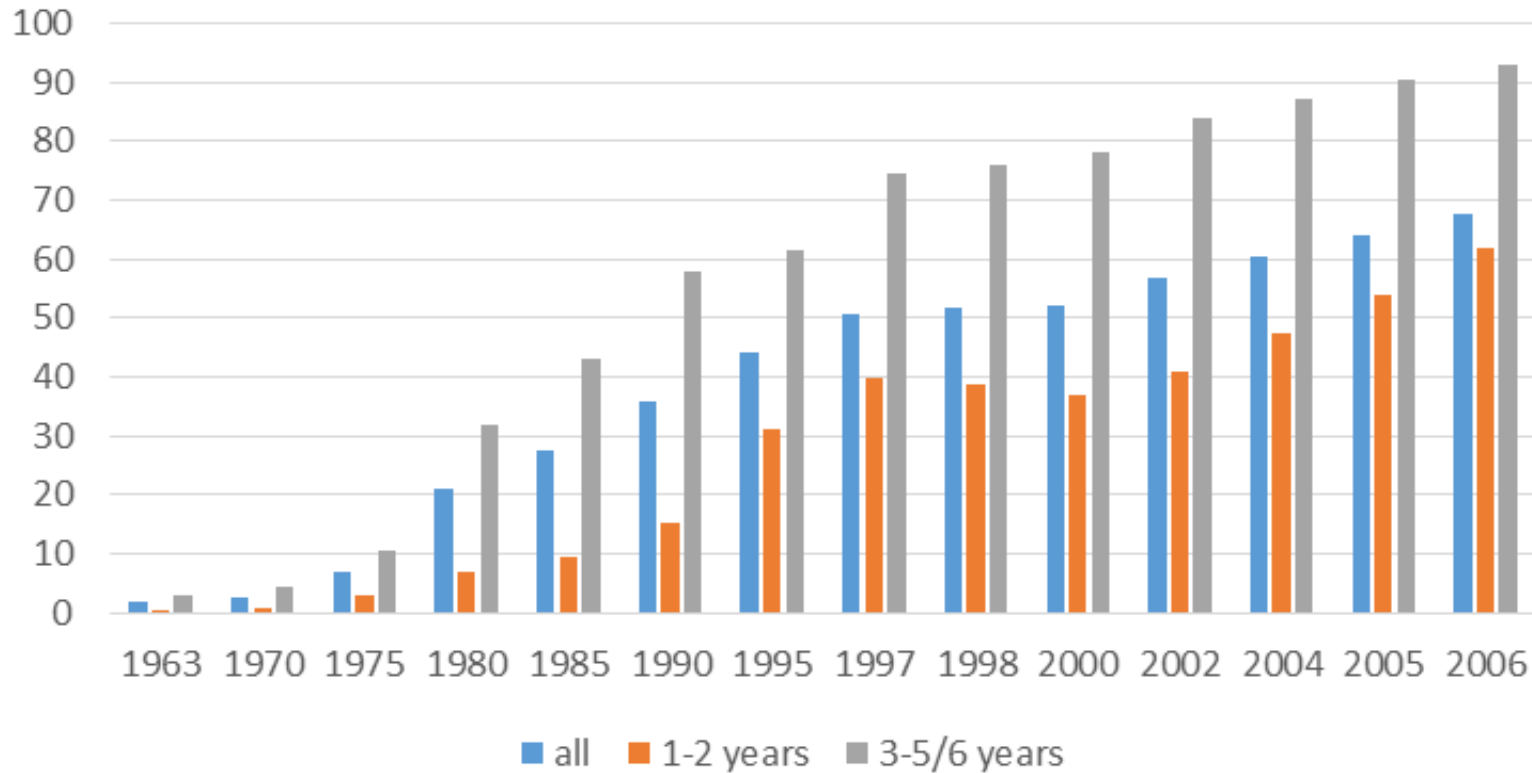
## Sources:

- Lars Gulbrandsen (2007) Barnehageplass – fra unntak til regel
- Utdanningsdirektoratet: Norske barnehager i tall 2013

NOVA

A research institute at  
OSLO AND AKERSHUS  
UNIVERSITY COLLEGE  
OF APPLIED SCIENCES

## Childcare coverage 1963-2006

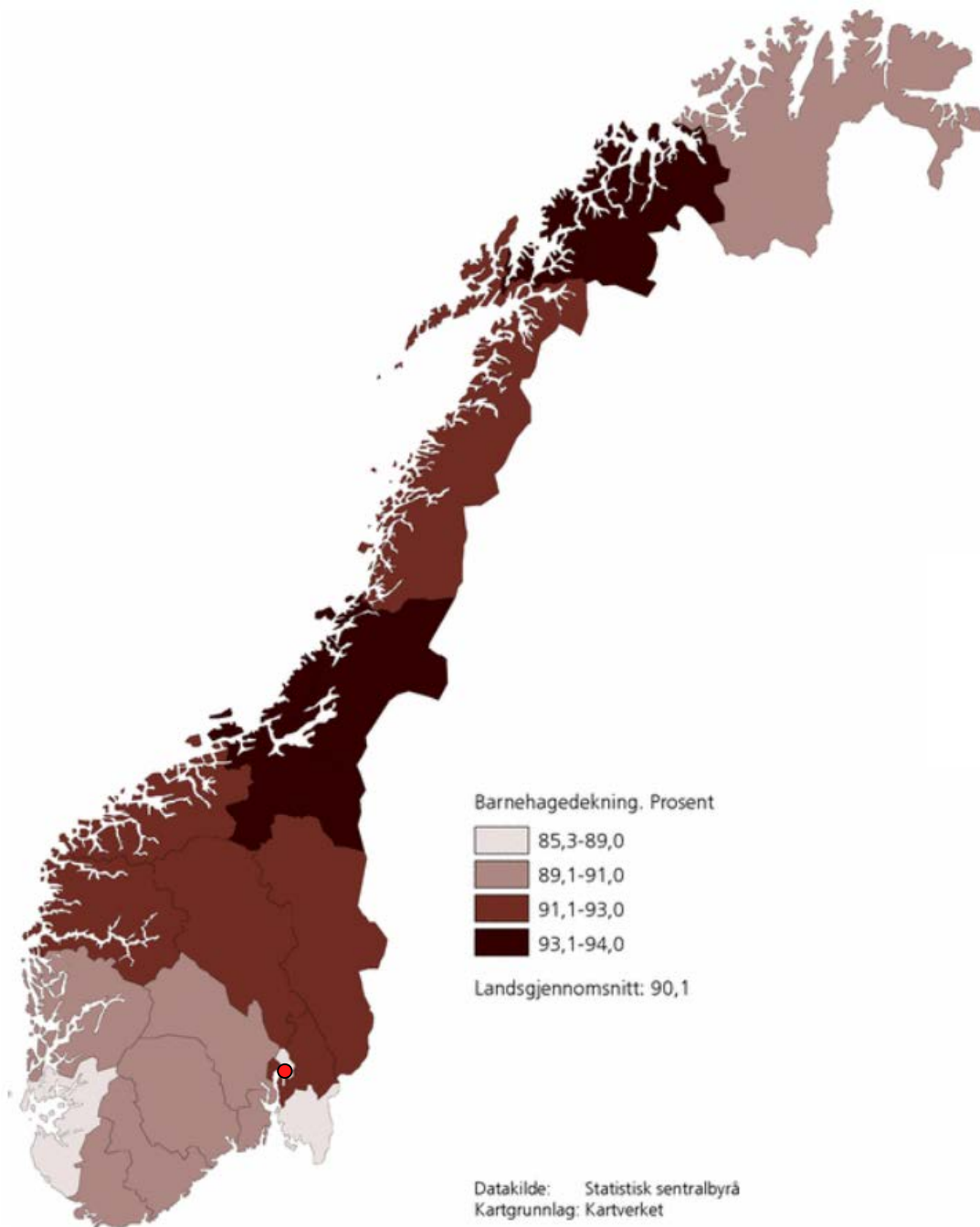


Source: Lars Gulbrandsen (2007)  
**Barnehagepass – fra unntak til regel**

# Main figures – kindergartens 2013

|                                    | 2013   | Difference from last year | Difference last 5 years |
|------------------------------------|--------|---------------------------|-------------------------|
| Number of children in kindergarten | 287177 | 1024                      | 25291                   |
| Percentage of children 1-5 years   | 90     | -0,1                      | 2,9                     |
| Percentage of children 1-2 years   | 79,8   | -0,4                      | 5,1                     |
| Percentage of children 3-5 years   | 96,5   | -0,1                      | 1                       |
| Number of kindergartens            | 6296   | -101                      | -409                    |
| Percentage of public kindergartens | 47     | 0                         | 1                       |
| Employees                          | 93573  | 2334                      | 12123                   |
| Source: Statistics Norway          |        |                           |                         |





Percentage of children 1-5 years in kindergarten 15. December 2012

**Source:** Statistics Norway.

**More information:**

<http://www.ssb.no/barnehager/>

# Caring for the elderly

- 13 % of the population in Norway is 67 years or older.
- In 2050, 21 % will be over 67 years.
- The 1960s – 1980s: a strong growth in public supply of long-term care services.
- This tendency has reversed: In 1991 half of the elderly above 90 years were living in institutions. In 2011 this figure had been reduced to less than one third.
- Today four out of five elderly live in their own homes without any assistance from municipal services, while one out of five live at home with services or in some form of assisted housing.

Source: Statistics Norway: Statistical analyses 137.  
Health and care. Use of services among the elderly.  
Published: 27 June 2013

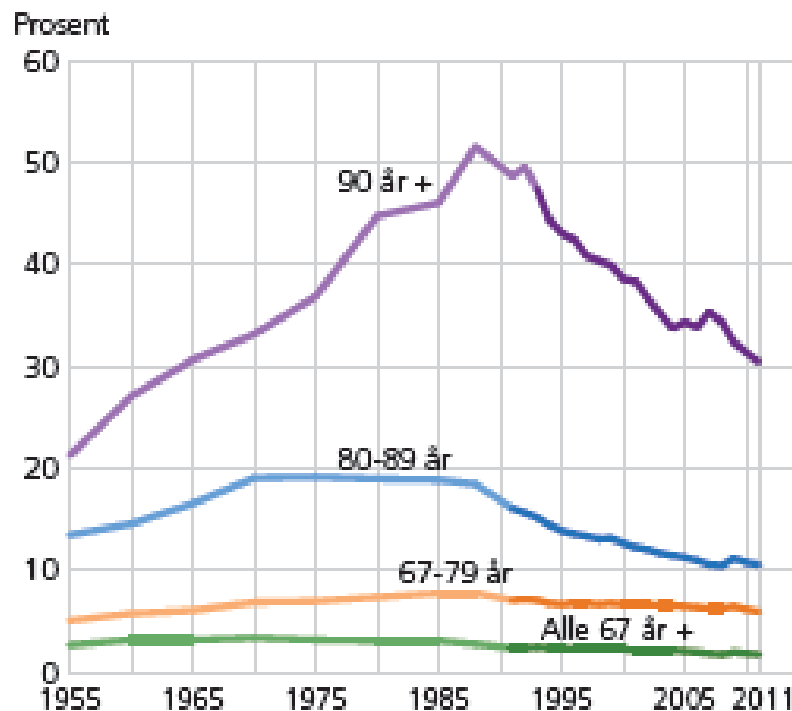


NOVA

A research institute at  
OSLO AND AKERSHUS  
UNIVERSITY COLLEGE  
OF APPLIED SCIENCES

# Percentage of elderly living in institutions

Figur 1. Andel eldre i institusjon. Aldersgrupper 67 år og over. 1955-1988, 1991-2011<sup>1</sup>. Prosent



<sup>1</sup> Brudd i tidsserier: Til 2006 er tallet på mottakere innhentet per summariske skjema. Fra og med 2007 er data henta fra IPLOS-registeret. Tall fra og med 2007 inkluderer også beboere i barneboliger og avlastningsinstitusjoner, som ikke tidligere var inkludert statistikkgrunlaget.

Kilde: Daatland 1990 (beregnete tall fram til 1988), og Pleie og omsorgsstatistikk, 1992-2011, Statistisk sentralbyrå.

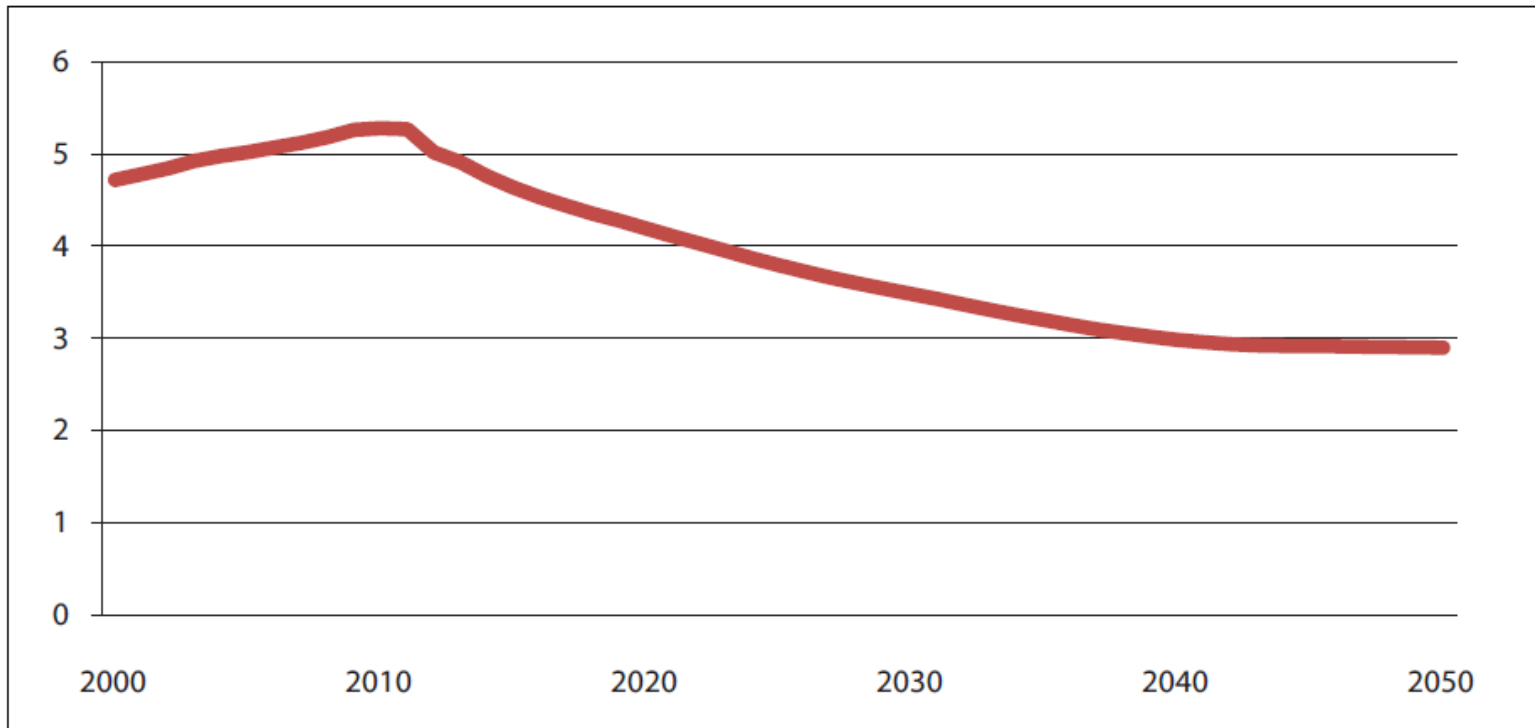


NOVA

A research institute at  
OSLO AND AKERSHUS  
UNIVERSITY COLLEGE  
OF APPLIED SCIENCES

# The supply of carers

Number of persons of working age (16-66 years) per person 67 years and older. 2000-2050



Source: Official Norwegian Reports NOU 2011: 11  
Innovation in the Care Services



# Care services and immigration

- In 2011, immigrants performed 13 % of the 129,000 man-years in long-term care services in Norway.
- The corresponding percentage in Oslo was 40 per cent.
- Immigrants stand for half the increase in man-years in the last years
- Kindergartens also see an increasing share of employees from immigrant background: from 11% in 2010 to - ? (figures not available)



# The «other» care work

- Informal care I: municipal services perform most of the total elderly care work, yet many are also cared for by their spouses, children, neighbours or friends
- Informal care II: 90% of young children are in kindergarten 8.30-16 Monday to Friday. The rest of the time is covered by their parents, siblings, grandparents, neighbours or friends or by more marginal childcare facilities ('barnepark', 'åpen barnehage')
- Informal care III: au pairs and other privately paid care workers complete the picture



# Care strategies and gender

- Informal care I-III performed more by women than by men
- 90% of all kindergarten employees are women
- Around 90% of all (health and social) care professionals are women
- 35% of all women and 14% of all men are employed part-time



NOVA

A research institute at  
OSLO AND AKERSHUS  
UNIVERSITY COLLEGE  
OF APPLIED SCIENCES